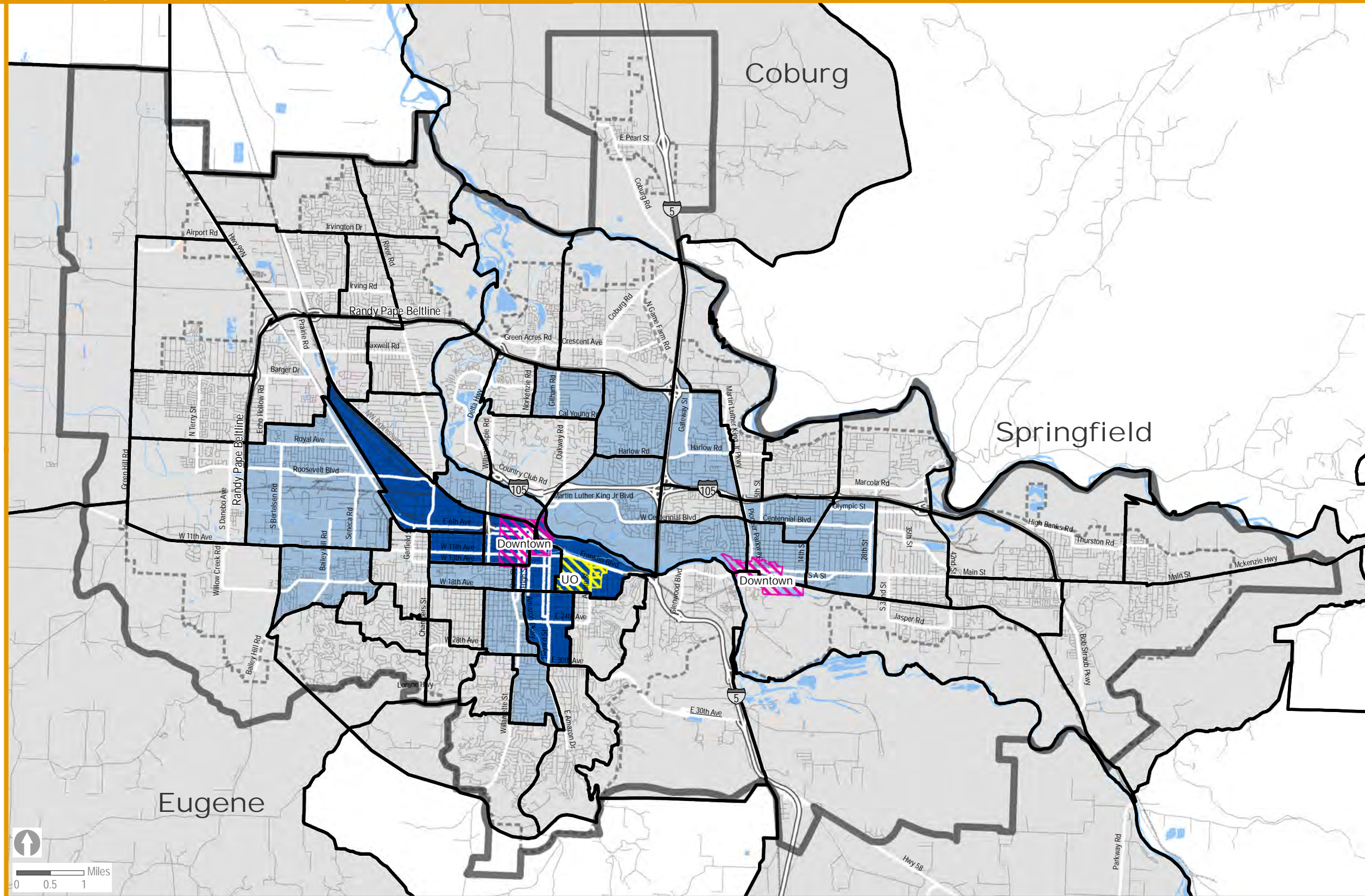


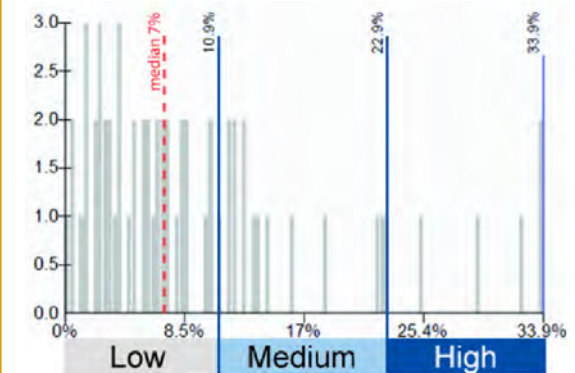
Equity & Opportunity Assessment Transportation Access

Households with No Vehicles

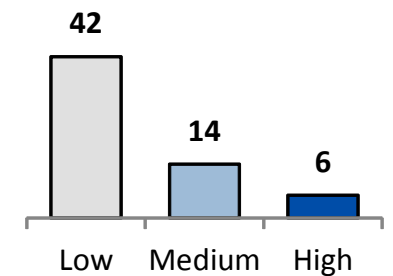


This map shows the percentage of households without a vehicle. About 10% of households do not have a vehicle in the Metropolitan Planning Organization area census tracts.

The full range of data for each map has been divided into thirds to create low, medium, and high percentage categories. A histogram is also included to show that the data is not necessarily distributed equally across these three categories. About 30% of the households without vehicles are in the top 6 census tracts in the highest percentage category.



The chart below shows the number of tracts in the Metropolitan Planning Organization Area that have low, medium, and high percentages.



Map date: 9/11/13 Map data: U.S. Census Bureau, ACS 2007-11, Table B25044
 Caution: This map is based on imprecise source data, subject to change, and for general reference only. The work that provided the basis for this map was supported by funding under an award with the U.S. Department of Housing and Urban Development. The substance and findings of the work are dedicated to the public. The author and publisher are solely responsible for the accuracy of the statements and interpretations contained in this publication. Such interpretations do not necessarily reflect the views of the Government.

- Census 2010 Tracts
- Metropolitan Planning Organization Area boundary
- Urban Growth Boundaries

- Percentage of Households without Vehicles**
- Low: 0% - 10.9%
 - Medium: 11% - 22.9%
 - High: 23% - 33.9%